

Visit
of

Their
Royal Highnesses

THE
Duke & Duchess of York
To

WESTERN AUSTRALIA

May, 1927.



IS ROYAL HIGHNESS, PRINCE ALBERT FREDERICK ARTHUR GEORGE, DUKE OF YORK, was born at YORK COTTAGE, SANDRINGHAM, ON DECEMBER 14, 1895. HE FOLLOWED IN THE FOOTSTEPS OF HIS SAILOR FATHER, BY ENTERING THE ROYAL NAVY, AND WHEN ILL-HEALTH DENIED HIM THE NAVAL CAREER TO WHICH ALL HIS INSTINCTS ATTRACTED HIM, HE TURNED HIS ATTENTION TO THE ROYAL AIR FORCE, AND QUALIFIED FOR A PILOT'S CERTIFICATE. IN 1918, HE WAS TRANSFERRED TO FRANCE, SERVING ON THE STAFF OF THE INDEPENDENT FORCES, R.A.F. IN 1919, HE BECAME A SQUADRON LEADER, AND IN THE FOLLOWING YEAR WAS PROMOTED TO THE RANK OF WING COMMANDER.

THE WAR OVER, PRINCE ALBERT, ACCOMPANIED BY HIS BROTHER, PRINCE HENRY, WENT INTO RESIDENCE AT CAMBRIDGE, AS AN UNDERGRADUATE OF TRINITY COLLEGE. HIS PUBLIC CAREER BEGAN IN EARNEST ON JUNE 5, 1920, WHEN HE WAS CREATED DUKE OF YORK. SINCE THEN, HE HAS BEEN PROMINENT IN THE PUBLIC LIFE OF THE EMPIRE, TAKING A KEEN PERSONAL INTEREST IN ALL MATTERS AFFECTING THE WELFARE OF THE BRITISH PEOPLES. ON THREE OCCASIONS HE HAS REPRESENTED THE KING AT A FOREIGN COURT.

THE DUCHESS OF YORK, AS THE CHARMING LADY ELIZABETH BOWES-LYONS, WAS MARRIED TO THE DUKE OF YORK IN 1923. THE LONDON "TIMES," ON THE OCCASION OF THE MARRIAGE, WROTE: "WE MAY WONDER WHETHER THE DUKE COULD HAVE CHOSEN A BRIDE MORE FITLY REPRESENTATIVE OF HIS FATHER'S PEOPLE, MORE TRULY BRITISH TO THE CORE, MORE WORTHY OF THE HONOUR AND THE RESPONSIBILITY WHICH ARE TO BE HERS." THE NATION LOVES HER AS A SPLENDID TYPE OF BRITISH WOMANHOOD, TRANSPARENTLY SINCERE, WITH A COMPLETE LACK OF AFFECTATION OR POSE, AND COMBINING AMIABILITY WITH GREAT STRENGTH OF CHARACTER.



Vandyke Photo.—By courtesy *The Daily News*, Perth.

HIS ROYAL HIGHNESS THE DUKE OF YORK.



Vandyke Photo.—By courtesy *The Daily News*, Perth.

HER ROYAL HIGHNESS THE DUCHESS OF YORK.

WILDFLOWERS OF WESTERN AUSTRALIA.

1. *Caladenia Longicauda* (Spider Orchid).
2. *Anigozanthus Manglesii* (Red and Green Kangaroo Paw).
3. *Hovea Trisperma* (Hovea).
4. *Caladenia Patersoni* (White Spider Orchid).
5. *Leschenaultia Biloba* (Blue Leschenaultia).
6. *Isotropis Striata*.
7. *Caladenia Flava* (Cowslip Orchid).
8. *Diuris Longifolia* (Stag's Head Orchid).
9. *Verticordia Grandis* (Crimson Verticordia).
10. *Burchardia Umbellata*.



11. *Clitanthus Dampieri* (Sturt's Desert Pea).
12. *Anigozanthus Humilis* (Orange Kangaroo Paw).
13. *Caladenia Discoidea* (Small Spider Orchid).
14. *Chamaelaucium Uncinatum* (Wax Flower).
15. *Trichinium Obovatum* (Goldfields Clover).
16. *Hibiscus Hauegelii* (Swan River Hibiscus).
17. *Banksia Coccinea*.
18. *Kennedyia Nigricans* (Black and Gold Kennedyya).
19. *Thysanotus Dichotomus* (Fringed Lily).
20. *Cephalotus Follicularis* (Pitcher Plant or Fly Trap).
21. *Boronia megostigma* (Sweet Scented Boronia).



Western Australia.



WESTERN AUSTRALIA, with a territory extending 1,480 miles north and south and 1,000 miles east and west, and comprising 975,920 square miles or 624,588,800 acres, embraces nearly one-third of the area of Australia. It is difficult to believe that at the time of the visit of His Majesty, King George V. and Queen Mary (then the Duke and Duchess of York) in 1901, the population of the whole State only totalled approximately that of the metropolitan area to-day. And it is almost equally difficult for the visitor to grasp the fact that the population of a territory which is approximately eleven times the size of Great Britain is to-day only 379,000, and that this small handful of people are not only entrusted with the Government and development of such a vast area, but that they have probably accomplished more than a similar number of people in any part of the world.

EFFECT OF GOLD DISCOVERIES.

Western Australia was founded on 18th June 1829, although the first settlement was established at Albany in January, 1827. Less than 100 years have therefore elapsed since the first settlers



Royal Mint, Perth.



Hannan Street, Kalgoorlie.

arrived from the Motherland to establish the colony. For the first sixty years development was extremely slow, as is shown by the fact that in 1890 the population only totalled 46,000. Up to that year the Colony was governed from Downing Street, but Responsible Government was then granted and the first Parliament under the new constitution was opened on December 30, 1890.

Almost immediately afterwards a remarkable period of activity commenced, although this was in no way due to the change of Government. In 1892 a rich discovery of gold was made at Coolgardie and this was followed in 1893 by a further and even more wonderful discovery at Kalgoorlie. Gold had previously been located in various parts of the State, but the total quantity produced up to the year before Coolgardie was discovered was only 27,000 ounces, valued at £115,000. Coolgardie marked the beginning of a new era. In ten years the population rose from 58,000 to 211,000. At the beginning of the present century very little attention had been devoted to wheat growing, and it was necessary to import wheat and flour from the other States. Up to 1903 mining dominated the public mind, but thereafter a gradual development of primary production took place and the rate has speedily increased during the last few years. When the war broke out in 1914 a big forward movement in land settlement was proceeding, but the large number of enlistments for service overseas

made such a drain upon the manhood of the country that development practically ceased during the years 1917-1920 inclusive. It was not until the men had returned and were re-absorbed in civil life that the forward movement again obtained momentum. To-day the State is fast overtaking the wheat-producing States of Eastern Australia in the matter of production.

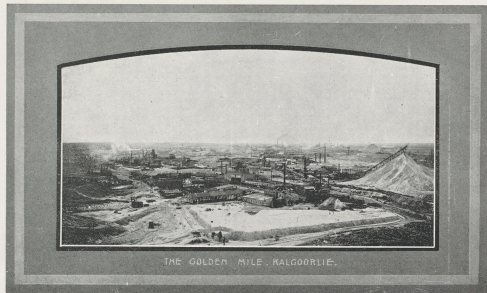


When Kalgoorlie boomed.

GOLD PRODUCTION.

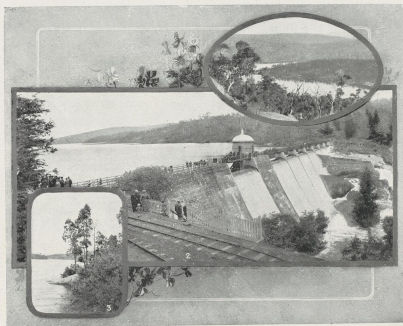
The gold yield reached its zenith in 1903, when the value of ore produced totalled £8,770,719. In the two succeeding years the value also topped £8,000,000, but thereafter a decline set in, which has continued steadily until the present time. The value of the industry to Western Australia, however, can be gauged from the fact that gold produced now totals over £158,000,000. The rich discoveries on the Eastern goldfields had also been responsible for a great influx of people, and when the decline commenced, attention was naturally turned to the development of the great primary industries.

Although the decline in the gold yield has been persistent since 1903 and the annual value of production is now under £2,000,000, Western Australia is still responsible for 65 per cent. of the gold produced in Australasia, including New Guinea. Recent developments are hopeful, and if proposals which have been made for a revival of the industry are carried into effect, the long period of decline should very soon come to an end.



GOLDFIELDS WATER SUPPLY SCHEME.

One of the most remarkable achievements connected with the development of the gold-mining industry was the building of the Goldfields Water Supply Scheme, by which water is pumped from the Mundaring reservoir in the Darling Range, about 20 miles from Perth, over 350 miles to Kalgoorlie. The scheme has excited the admiration of visitors from all parts of the world. The transformation wrought by the advent of water at Kalgoorlie was indeed wonderful. Although originally conceived for the one purpose of supplying the people of the Goldfields, the scheme is now being extensively utilised for agricultural purposes, and 50 per cent. of the water annually pumped from the reservoir at Mundaring finds its way to agricultural towns and districts.



1, 2, and 3. Views of Mundaring Weir.

MINERAL WEALTH.

Apart altogether from the value of gold production the State is immensely rich in mineral resources. Western Australia is, indeed, one of the most remarkable mineral regions in the world. Mineral species totalling 235 in number have already been met with in the State, and of the rarer minerals 36 are confined to this State alone and have not, so far, been recorded in other parts of Australia. The value of minerals, other than gold, exported from the State up to June 30 last, totalled £6,716,000.

Extensive coal fields are being worked at Collie, in the South-Western portion of the State, and although other deposits are known to exist, they have not yet been exploited. Collie coal is used almost entirely on the State Railways and the value of coal exported totals over £5,000,000.

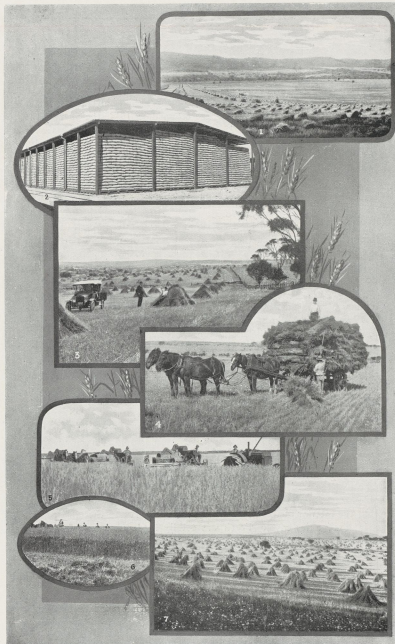
Several huge deposits of iron ore exist in various parts of the State. At Cockatoo and Coolan Islands, at Yamply Sound in the North-West of the State, there are phenomenally rich and extensive deposits. According to the State Mining Engineer, the quantity of ore in the two islands quarryable above highwater mark is 97,000,000 tons, but that if probable ore in the portions of the beds below sea level were taken into account the estimate would have to be increased several hundredfold. Towards the end of last year a six months' option over portion of Coolan Island was granted by the Government to an old-established firm of engineers and ironfounders in Eastern Australia.

Another mineral which exists in large quantities is manganese, and huge deposits are now being tapped.

Lead and tin fields have been fairly extensively exploited, the former on the Northampton fields, and the latter at Greenbushes, in the South.



A State Battery.



1 Wheat Farm, Northam. 2. Wheat Stacks. 3 and 7. Wheat Farm, York.
4. Hay Carting. 5. Harvesting. 6. A 5,000-acre Crop.

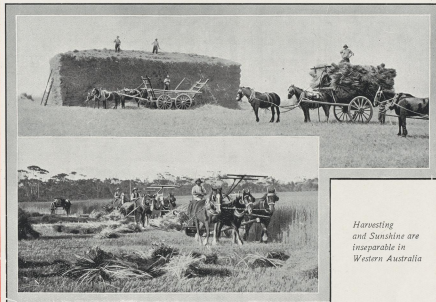
WHEAT PRODUCTION.

The figures of wheat production in recent years are remarkable. In 1920, the area sown for wheat was little more than one and a quarter million acres, actually less than was cropped in 1914, the year of the outbreak of war; but in 1925, or five years later, the area was over 2,000,000 acres, and last year totalled 2,447,372 acres. Similarly, the yields have greatly increased. In the 1920-21 season the harvest yielded only 12½ million bushels, but this year it has totalled over 30 million bushels. The total value of wheat and flour exported from Western Australia up to the end of last year was approximately £40,000,000.

In connection with land development in Western Australia, it is important to remember that the demand for Crown lands has been so heavy that, although the State has constructed 3,864 miles of railway (which is equal to about one mile for every 97 members of the population), it is difficult at present to secure unalienated land adjacent to the means of transport. To meet the increasing demand, the State has for many years past undertaken an active policy of railway construction, and several lines are now being built or have been authorised to be built. The land selected up to the end of 1906 totalled 12½ million acres, but in the next 20 years, from 1906 to 1926, the area selected totalled 17½ million acres. The total land alienated, or in course of alienation, at the end of 1926, was just over 30 million acres, but only approximately one-third of that area is at present in use. It is estimated that the land still available for selection totals 38 million acres. This area is a little larger than England and Wales, and approximately 25 million acres are suitable for wheatgrowing. The terms under which land is selected are exceeding liberal.

One of the most remarkable aspects of land settlement and development in Western Australia is the fact that practically the whole of the wheat country was, 30 years ago, believed to be unsuitable for wheatgrowing purposes. At one time it was generally believed that the interior of this State was one vast desert and that the rainfall a hundred miles east of Perth was totally inadequate for wheat production. But the development which followed in the wake of gold mining dissipated the ignorance which existed even up to the beginning of the present century. To-day wheat is being grown as far east as Southern Cross—one of the first gold-mining fields discovered—and the Government is taking steps to test the areas east, north, and south, in an endeavour to show that wheat-farming can be profitably

carried on even in districts where the rainfall is much less regular than that experienced in the areas nearer the coast. Throughout the wheat country Nature has provided huge rock areas, sometimes extending over 200 or 300 acres, by which the problem of summer water shortage is being solved. These rock areas are now being utilised for the conservation of water for the purpose of supplying agricultural towns, which have had a mushroom growth. In addition, water is being reticulated to agricultural towns and to settlers along the Goldfields Water Supply main.



*Harvesting
and Sunshine are
inseparable in
Western Australia*

SHEEP AND WOOL.

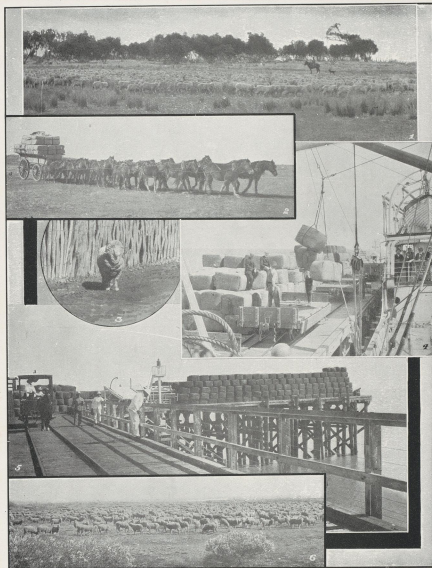
Wool production figures do not show such a remarkable development in latter years, for the reason that the pastoral industry was established prior to the discovery of gold. In 1890, 2½ million sheep were depastured throughout the State, but the influence of the gold boom in diverting the attention of producers from the work in which they were engaged is revealed in the fact that during the next ten years no increase in the number of sheep took place. Practically every man who could left for the goldfields to join in the feverish search for gold. But with the decline in the gold yield, and as greater attention was devoted to primary production, the increase in the number of sheep took an upward trend, and by 1910 the number had more than doubled. The greatest number of sheep in any one year was recorded in 1918 when the total reached well over 7,000,000. In the years subsequent to 1918 the number ranged about 6,500,000, but last year there was an increase of 469,000 head, bringing the total well up to the record year of 1918. For some years past the value of the wool clip has fluctuated between three and four million pounds sterling annually, and the total value of wool exported from Western Australia is over £48,000,000.



Cattle awaiting slaughter, Wyndham Meatsworks.

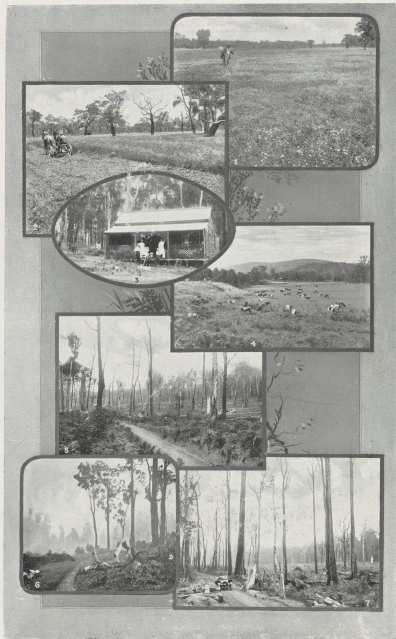
CATTLE RAISING.

Cattle raising for home and foreign markets is mainly confined to the East and West Kimberleys in the North-West. There are approximately 750,000 head of cattle throughout the State.



THE WOOL-GROWING INDUSTRY.

1. Mustering.
2. Wool en route to the Coast.
3. An Aristocratic Sir.
4. Shipping Wool at a North-West Port.
5. Wool on the Jetty at Derby.
6. The living embodiment of wealth.



GROUP SETTLEMENT VIEWS.

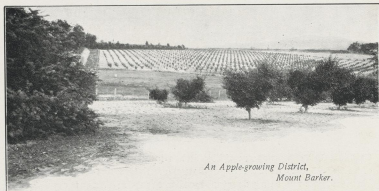
1 and 2. Clover Fields 3. Settler's Cottage. 4. Cattle Grazing. 5. Clearing
6 and 7. Burning off.

GROUP SETTLEMENT.

The work of developing Western Australia has never been made a political question, and succeeding Governments have endeavoured to promote primary production to the fullest extent. This resulted in the establishment of the Group Settlement Scheme, for the extension of which an agreement was made between the State Government and the Federal and Imperial Governments, under which migrants from Great Britain are settled in groups in the South-Western portion of the State. The basic industry of the groups is dairying, for which the soil and climatic conditions are eminently suitable. At the end of December last the expenditure under the Group Settlement Scheme totalled £3,928,000. The groups established then totalled 136, and the number of settlers 2,290, whilst the population of the groups totalled 9,540. The area of land being developed under group settlement conditions totalled 355,000 acres and the area sown last year totalled 48,458. Sixty-eight schools, serving 122 groups, and six hospitals, have been erected. There are approximately 10,000 dairy cattle on the groups, and the production of butter fat per year is estimated at more than 1,000,000 lbs. As the State is still a large importer of dairy produce from the Eastern States, the existence of a local market for the product of the groups, and which must exist for some years to come, is an important factor. The scheme is still more or less in its experimental stage, but the group principle is recognised as a solution for the settlement of the heavy timbered country of the South-West.



A Settler's Cottage.



*An Apple-growing District,
Mount Barker.*

THE FRUIT INDUSTRY.

Western Australia has a very large area in the South-West suitable for fruit-growing. Apples constitute the principal crop, and Western Australian apples have commanded top prices on the London market. This year a record crop has been harvested, totalling approximately 780,000 bushels, fifty per cent. of which will probably be exported to the United Kingdom and the Continent. Viticulture has been less extensively undertaken, but there are large areas on the eastern and western slopes of the Darling Range eminently suitable for the production of superior quality fruit. The State is advantaged because there is no need, as in other parts of Australia, for irrigation, and a further advantage is obtained because Western Australia is at least one week nearer to the markets of the Old World.



Grape Picking, Swan District.

FOREST WEALTH.

In the South-western portion of the State there are immense areas of karri and jarrah forests. The timber industry is proving an increasingly valuable asset, and last year the export value reached the record total of over £1,500,000. Prior to that year, the total export value was £22,000,000 whilst the export value of sandalwood totalled approximately £4,000,000. Up to a few years ago the State had no definite forest policy and no organised effort had been made to preserve the forest wealth of the country, but efforts have latterly been directed toward the perpetuation of the State's forest resources.



A Giant's Fall.

It is hoped that the area dedicated as State forests, totalling close on 1,000,000 acres, will, within the next few years, be greatly extended, until eventually the whole of the forest country will be scientifically worked, thus ensuring an inexhaustible supply of timber. Western Australian hardwoods have already become famous in England and other countries, but whereas jarrah was at one time regarded as almost useless for artistic furnishing purposes, it is now being extensively utilised in the manufacture of furniture, and particularly furniture for office purposes. The special qualities of these hardwoods are

receiving wider recognition than ever before, and the demand is likely to increase considerably in the near future. In the year before the war the value of timber exports totalled just over £1,000,000, but owing to war influences the value had dropped in 1918 to little more than £250,000. Since the war, however, the recovery has been progressive until, as stated, last year's export value established a record. The foundations of a scheme, which it is expected will ultimately put an end to the importation of softwoods and establish an export trade, are also now being firmly laid. Plantations of pines have been established, and the present policy should result not only in the preservation of the wonderful hardwood forests, but in new forests of softwoods springing up, thus ensuring a permanent supply of timber necessary for the State's own requirements, as well as to meet the growing export trade. There is a large variety of other timbers, many of which are used in the manufacture of high grade furniture, the graining being very beautiful.



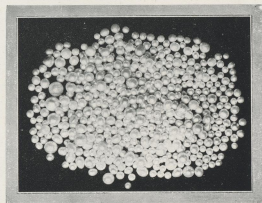
1. Sandalwood for Export. 2. Jarrah Forest. 3. A Forest Road. 4. Karri Forest.



Pearling Luggers at Brooms.

PEARLING.

The pearlshell fisheries of the North-West coast of Western Australia are world-famous. Up to the end of 1926, pearl shell



Western Australian Pearls.

valued at £6,870,000, and pearls valued at well over £2,200,000, had been exported.

EDUCATION.

Education in Western Australia is free, from the primary schools to the University. Children in outback districts, and where schools are not provided, are taught by correspondence.



1. Deepdene Cliffs and Valley.
2. On the banks of the Denmark River.
3. Frankland River.
4. Upper Kalgan River.
5. On the road to Normalup.

PICTURESQUE
HOLIDAY
RESORTS.

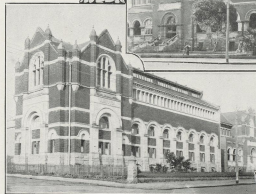


PERTH—A CITY OF FAVOURED SETTING.

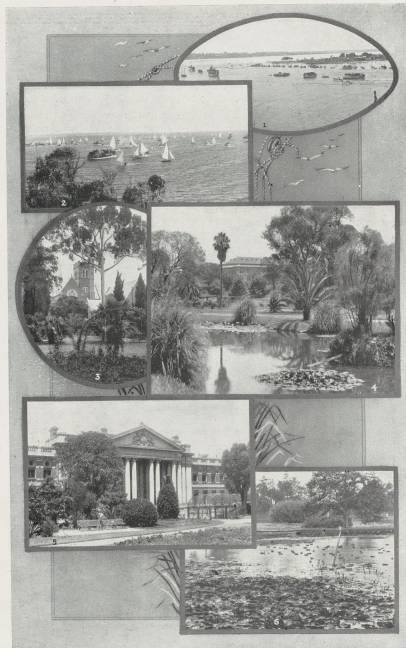
Perth.

Perth, the capital city of Western Australia, is picturesquely situated on the banks of the Swan River, about 12 miles from its mouth at Fremantle. The city was founded on August 12, 1829, by Captain Stirling, and of recent years has had a remarkable growth. The approach to the city from Fremantle by road or river is extremely beautiful and the view to be obtained from King's Park on the summit of Mount Eliza, overlooking the city and river, is admittedly one of the finest that can be obtained anywhere in the world. The preservation of over 1,000 acres of virgin bush in King's Park, and the reclamation of a broad strip of land fronting the river, has provided the people for all time with a wonderful natural reserve and playground, to which, of course, must be added the magnificent expanse of water of the river. Equable climatic conditions make natorial sports possible practically throughout the year. The city is well laid out, and the size and permanent nature of its public and private buildings reflect the permanency of the development proceeding inland, and testify to the faith of the people in the future of the State. Perth is well provided with park lands, and there are numerous beautiful beaches, both river and ocean, within a few minutes' run of the heart of the city. The population of the metropolitan area is 184,000.

Public Library.



Museum
and
Art Gallery.



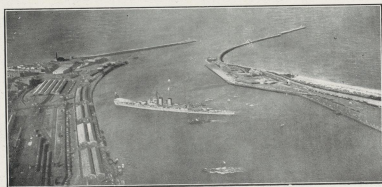
PERTH VIEWS.—1 and 2. Scenes on Swan River. 3. St. George's Cathedral, from Treasury Gardens. 4. Government House and Gardens. 5. Supreme Court Buildings. 6. Lily Pond, Queen's Gardens.



VIEWS OF PERTH.—1. Wellington Street. 2. A.M.P. Buildings. 3. Central Railway Station. 4. Hay Street, looking East. 5. Treasury Building and Town Hall. 6. Forrest Place, showing G.P.O. on right. 7. St. George's Terrace, looking West.

Fremantle.

The chief port of Western Australia is Fremantle, at the mouth of the Swan River, where a wonderful artificial harbour has been built. Fremantle is the western gate to the Commonwealth and is the western terminus of the Trans-Australian railway. The great increase in overseas trade of recent years has taxed the present capacity of the harbour to its fullest extent and within the next few years a further expansion upstream will have to be made. The berthing accommodation at Victoria Quay and the North Mole totals approximately 10,000 feet. The largest vessels trading to Australia can be accommodated, as is shown by the fact that at the time of the visit of the Imperial Service Squadron in 1924, H.M.S. "Hood," then the largest battleship afloat, was berthed with ease and safety, and the balance of the Squadron also accommodated within the harbour. Modern equipment exists for the expeditious handling of cargo. The growing importance of the port is demonstrated in the huge wool warehouses and other commercial buildings adjacent to the wharves. Several industrial establishments are situated at North Fremantle, including the State Implement Works.



H.M.S. "Hood," 45,000 tons, swinging in Fremantle Harbour.



FREMANTLE VIEWS.—1. Market Street. 2. Town Hall. 3. High Street. 4 and 5. Shipping Harbour. 6. Loading Wheat.

Albany.

Albany, the State's wonderful southern port, celebrated its centenary in January of this year. That the centenary should coincide with the visit of their Royal Highnesses, the Duke and Duchess of York, is peculiarly appropriate, first, because of the personal association of His Majesty King George V. (father of the visiting Prince and Duke of York) with the port; and second, because of the perpetuation of Royal associations in geographical nomenclature at this place.

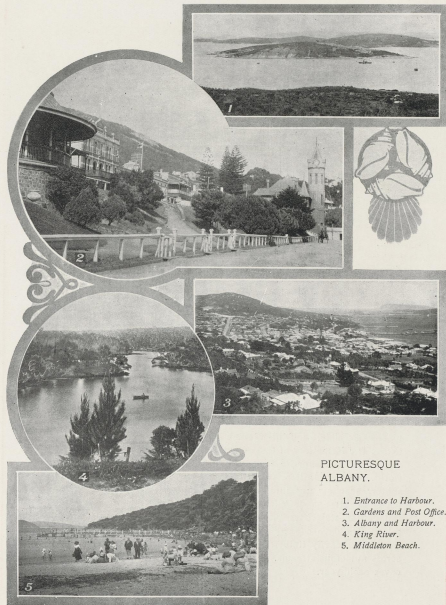
The name, King George's Sound, was given by Captain Vancouver in 1792 to the magnificent sheet of water east of the harbour entrance. Princess Royal Harbour was so named on the occasion of a subsequent visit, the Harbour being discovered on the birthday of Princess Charlotte, only daughter of King George IV. Major Edmond Lockyer established the first Western Australian settlement at Albany on January 21, 1827, although he actually arrived from Sydney on Christmas Day, 1826.

On May 16, 1881, their Royal Highnesses, Prince Albert Victor and Prince George of Wales (now King George V.) arrived at Albany in H.M.S. "Bacchante," remaining until June 10. In 1901, His Majesty (who was then the Duke of Cornwall and York) again visited the port, together with Her Majesty Queen Mary (then the Duchess of York), the Royal Yacht "Ophir," having unexpectedly put into Albany to escape the adverse weather conditions prevailing off Cape Leeuwin.

On the occasion of the centenary celebrations in January of this year, His Majesty the King recalled his earlier associations with the port in the following message to His Excellency the Governor, Sir William Campion:

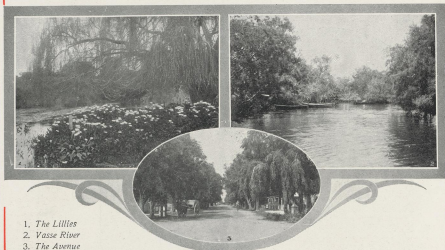
"I am much interested to know of to-day's celebration of the centenary of the settlement of Albany. My first experience of Albany was in May, 1881, when serving on board H.M.S. "Bacchante," and again 25 years ago. The Queen and I will never forget the kindly reception accorded to us on our unexpected landing on that occasion. On this happy commemoration we gladly send our best wishes to the inhabitants for their happiness and prosperity.—George, R.I."

In view of these earlier Royal associations, the visit of the present Duke and Duchess of York at a time when the State has to record the remarkable history of its first 100 years as a possession of the British Crown, is indeed a happy Empire event.



PICTURESQUE
ALBANY.

1. Entrance to Harbour.
2. Gardens and Post Office.
3. Albany and Harbour.
4. King River.
5. Middleton Beach.



1. The Lillies
2. Vasse River
3. The Avenue

BUSSETON.

A South-Western Holiday Rendezvous near the Cave Country.

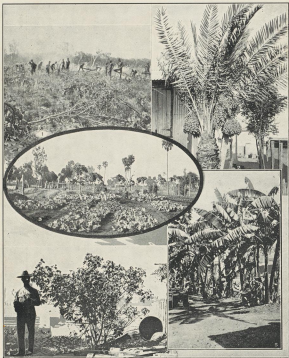
The Caves.

Western Australia possess a wonderful caveland, which commences far to the north of the capital city and ends at the Leeuwin Light in the South, a distance of over 250 miles. The series of caves north of Perth, however, have not yet been opened to the public, and out of over a hundred known caves in the South-West only a few have been made accessible, and illuminated throughout by electricity. The extent and formations of these caves are recognised by world travellers as equal, if not superior to, anything to be found in any part of the world. For countless years Nature has been transforming huge subterranean caverns into fairy palaces glittering with dazzling displays of strange jewellery, decorating the earth's interior with stalagmites, stalactites, pillars and shawls of wondrous symmetry and color. The cave country is wonderfully picturesque, the main road traversing heavily timbered country, close to a rugged seaboard, and across numerous streams. Thousands of visitors are attracted to the caves each year.



CAVES OF THE SOUTH-WEST.

1. Mysteries, Yallingup Cave.
2. Folded Shawl, Yallingup Cave.
3. Arab's Tent, Yallingup Cave.
4. Eagle's Wings, Mammoth Cave.
5. Suspended Table, Lake Cave.⁷



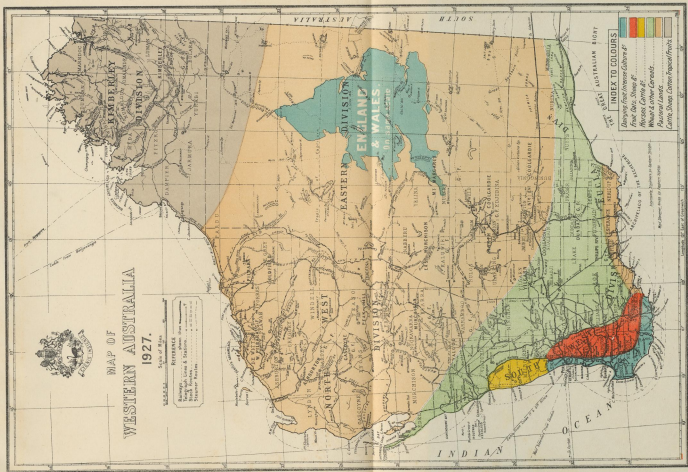
TROPICAL PRODUCTS GROW PROLIFICALLY.

1. Atorrigles clearing Land.
2. Date Palm.
3. A Station Garden.
4. Cotton Bush.
5. Plantains at Port George.

PERTH:

By Authority: FRED. WM. SIMPSON, GOVERNMENT PRINTER.

T10957/27





T. 1000 2/10

